

澳門
MACAU



IAESTE
CHINA MACAU SAR

Handbook for
Incoming trainees



澳門大學
UNIVERSIDADE DE MACAU
UNIVERSITY OF MACAU

Contents

1. Macau 101

- 1.1 About Macau SAR
- 1.2 About University of Macau (UM)
- 1.3 About IAESTE China Macau SAR

2. How to get to Macau

- 2.1 Flights directly to Macau
- 2.2 Flight to Hong Kong, transit from Hong Kong to Macau
- 2.3 Travel to Zhuhai or nearby cities in China and transit by land

3. Arrival and Accommodation

(This section contains general outlines. More details can be found in the attached “Arrival and Dormitory Check-in Instructions”)

- 3.1 Registration
- 3.2 Arrival
- 3.3 Accommodation
- 3.4 Reception and Activities
- 3.5 Map of UM

4. Visa and Medical Insurance

- 4.1 Macau Visas
- 4.2 Hong Kong Visas
- 4.3 China Visas
- 4.4 Medical Insurance

5. Life in Macau

- 5.1 Weather
- 5.2 Language
- 5.3 Currency
- 5.4 Transportation
- 5.5 Time
- 5.6 Office Hours
- 5.7 Voltage
- 5.8 Consulates in Hong Kong and Macau
- 5.9 Emergency and Useful Phone Numbers
- 5.10 Useful Websites
- 5.11 Useful Apps for Getting around in Macau

1. Macau 101

1.1 About Macau SAR



Macau Special Administrative Region (SAR) is located in the south of China on the western bank of the Pearl River Delta. It borders the city of Zhuhai of the Guangdong by the Border Gate (Portas do Cerco) isthmus to the north. Before the arrival of Portuguese merchant-explorers in the early 1550s, the first settlers in Macau were fishermen and farmers from various regions of China. Macau used to be a strategic trading post due to its location. Macau was colonized by the Portuguese and remained under their control until 20 December 1999 when People's Republic of China resumed exercise of sovereignty of Macau and established the Macau Special Administrative Region.

Macau is small but populous city - with an estimated population of 630,000 - among which 95% are ethnic Chinese from different provinces, and the remaining 5% is composed of Portuguese, other Europeans and people from other regions. Macau SAR is divided into four main areas: Macau Peninsula, Taipa, Cotai and Coloane.

Macau has gradually developed into a metropolitan city with cultures of both the East and the West. Thanks to its rich history, cultural diversity and booming gaming industry, Macau has become one of the major tourist destinations with its World Heritage Centre, unique food cultures and entertainment attractions.

 **Macau Government Tourist Office:**

<http://www.macautourism.gov.mo>

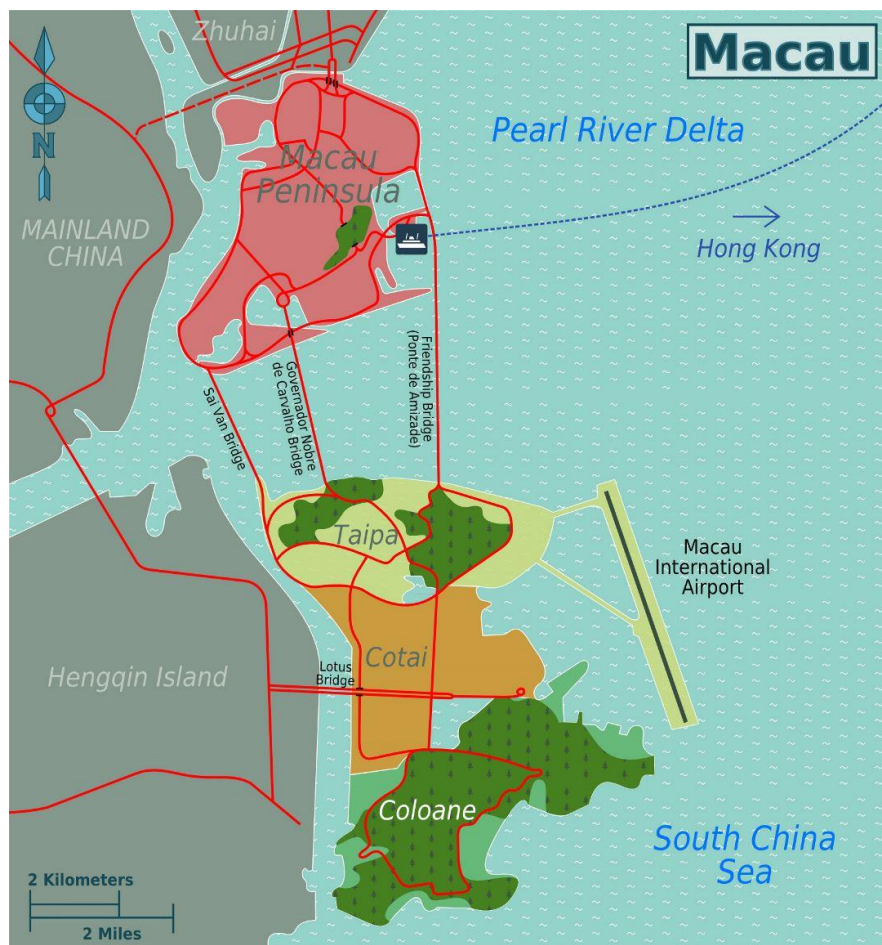


Image Source: <https://www.mapsland.com/asia/macau/large-districts-map-of-macau>

1.2 About University of Macau (UM)



University of Macau (UM), being the successor of University of East Asia founded in 1981, is the only public, comprehensive University in Macau SAR. It is also the largest university in Macau both in terms of the number of full-time students and the number of academic programs offered. The university offers academic programmes at bachelor, master and doctoral levels encompassing fields of social sciences, arts and humanities, business administration science and technology, health sciences, education, and law. English is the main teaching medium while Portuguese and Chinese are also the teaching media for several specific academic programmes.

As is a young and dynamic university, UM has been progressively increasing its research activities. Apart from internal research projects, the university has entered research co-operations with universities and research institutions in China, Europe and the U.S. The cooperation includes projects supported by the National Science Foundation of China and Eureka projects of the EU.

University of Macau advocates international exchanges and maintains very good academic links with over 100 sister universities worldwide. The university is a member of several international and regional university associations: including International Association of Universities (IAU), International Association of University Presidents (IAUP), Association of Universities of Portuguese Language (AULP), Association of Universities of Asia and the Pacific (AUAP), International Association for the Exchange of Students for Technical Experience (IAESTE) and University Mobility in the Asia and Pacific (UMAP), etc.

 **University of Macau:**

<http://www.umac.mo>

1.3 About IAESTE China Macau SAR



University of Macau joined IAESTE as an Associate Member 2007.

IAESTE China Macau SAR (loosely known as “IAESTE Macau”) was officially established in February 2004 at University of Macau to launch IAESTE activities in University of Macau, and gradually, within Macau SAR. Currently, IAESTE Macau is cross-departmentally administered by full-time staff of University of Macau.

IAESTE Macau aims to provide international internship opportunities for students with strong technical knowledge as a means to gain technical and cultural experience abroad.

IAESTE Macau also raises internship opportunities in Macau SAR and facilitates inbound students from other countries to realize their practical training in our supporting companies and our respective on-campus units or departments.

 **IAESTE CHINA MACAU SAR:**

<http://www.umac.mo/gao/iaeste>

2. How to get to Macau

There are three routes to get to Macau SAR:

2.1 Flights directly to Macau



2.2 Flight to Hong Kong, transit from Hong Kong to Macau:

- a. Transit by SeaExpress (Hong Kong International Airport to Macau)
- b. Transit by regular Hong Kong-Macau ferries (Hong Kong Downtown to Macau)
- c. Transit by helicopter (Hong Kong Downtown to Macau)



2.3. Travel to Zhuhai or nearby cities in China and transit by land

→ Details of each arrival method is outlined below.

.....

2.1 Flight directly to Macau



Macau has an international airport located in Taipa Island with direct flights daily or several times per week to Singapore, Bangkok, Manila, Osaka, Beijing and other major cities in Asia.



 **Macau International Airport:**
<http://www.macau-airport.com>

.....

2.2 Flight to Hong Kong, transit to Macau

If flights to Macau is not desirable in your travel plan, Hong Kong International Airport (HKIA) is another convenient hub for transit. There are three ways to transit to Macau:

a. Transit by SeaExpress Ferries - Hong Kong Airport to Macau



Sky Pier at HKIA offers ferry transit service from the airport to Macau or Taipa Ferry Terminal without passing through customs/immigration in Hong Kong and you will collect your languages after arrival in Macau.

However, SeaExpress ferries are somewhat limited (only 3 or 4 ferries per day). Also, in most cases, you cannot sign up for a ferry that departs within 120 minutes of the actual flight arrival time.

b. Transit by Regular Ferries - Hong Kong Downtown to Macau







Besides Sea Express, there are the more frequent Hong Kong-Macau ferries in downtown Hong Kong that are more frequent (15-30 minutes per departure for 07:00-23:59; 1-2 hours per departure for 00:00-06:59).

After passing immigration and collecting your luggage at the airport, take taxi, Airport Bus or Airport Express trains to get to Shun Tak Ferry Terminal in Sheung Wan, Hong Kong. Take the ferry to travel to either Macau or Taipa Ferry Terminal.

**this option is also viable for those who would like to spend time in Hong Kong before arriving in Macau.*

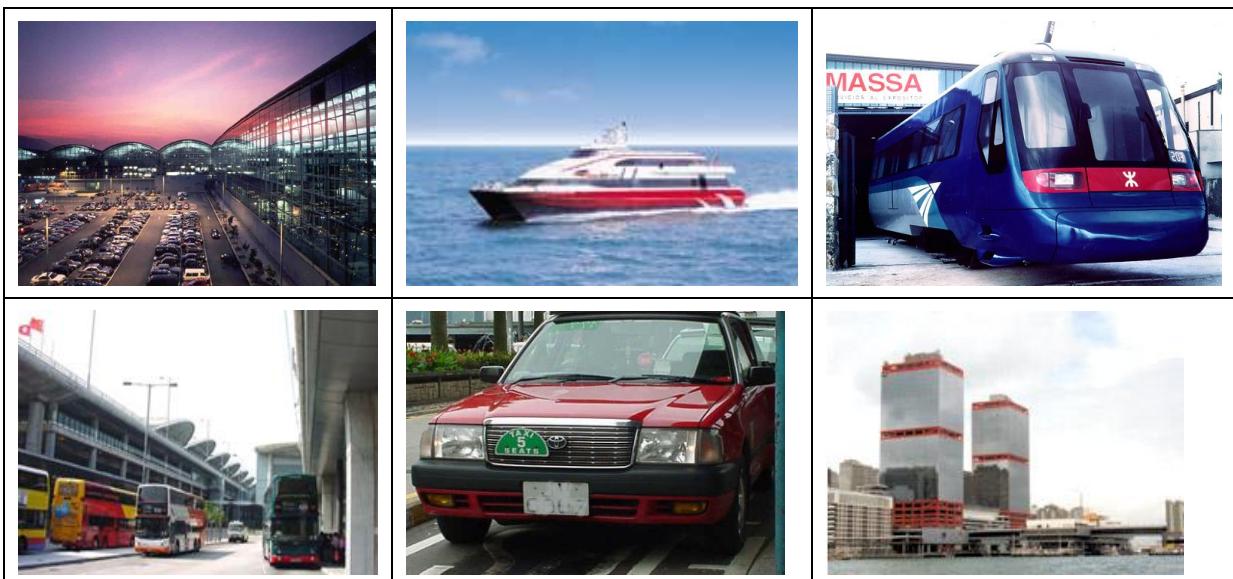
There are two ferry operators, Turbojet and Cotai Waterjet. Be sure to check out both to find the most suitable time and port of arrival.

-  Hong Kong International Airport: <http://www.hkairport.com.hk>
-  Turbojet: <https://www.turbojet.com.hk/en>
-  Cotai Waterjet: <https://www.cotaiwaterjet.com>
-  MTR Airport Express Train:
http://www.mtr.com.hk/en/customer/services/airport_express_index.html

c. Transit by helicopter (Hong Kong Downtown to Macau)



Helicopter transit is also available at Shun Tak Ferry Terminal (see Section 2.2a. above on how to get to Shun Tak Ferry Terminal). Each flight takes approximately 16-20 minutes and takes you to Macau Ferry Terminal.



From Left Clockwise:

HKCLK International Airport, Sea Express/Turbojet, HK Airport Express, Bus (HK), Taxi (HK), HK Shun Tak Ferry Terminal

2.3 Travel to Zhuhai or nearby cities in China and transit by land



You may travel to Zhuhai or other nearby cities and enter Macau through the two border gates in Zhuhai:

- Border Gate at Gongbei / Portas do Cercos Port
- Border Gate at Hengqing / Lotus Port

The Barrier Gate (Chinese border) in Zhuhai, Gongbei is opened daily from 0600 to 0100(+1); while the Hengqing Port operates 24 hours a day. Visitors from Zhuhai or other regions in Mainland China must pass through the Customs at the Gate to enter Macau.

Please check if you need a visa for transit through the mainland of China.



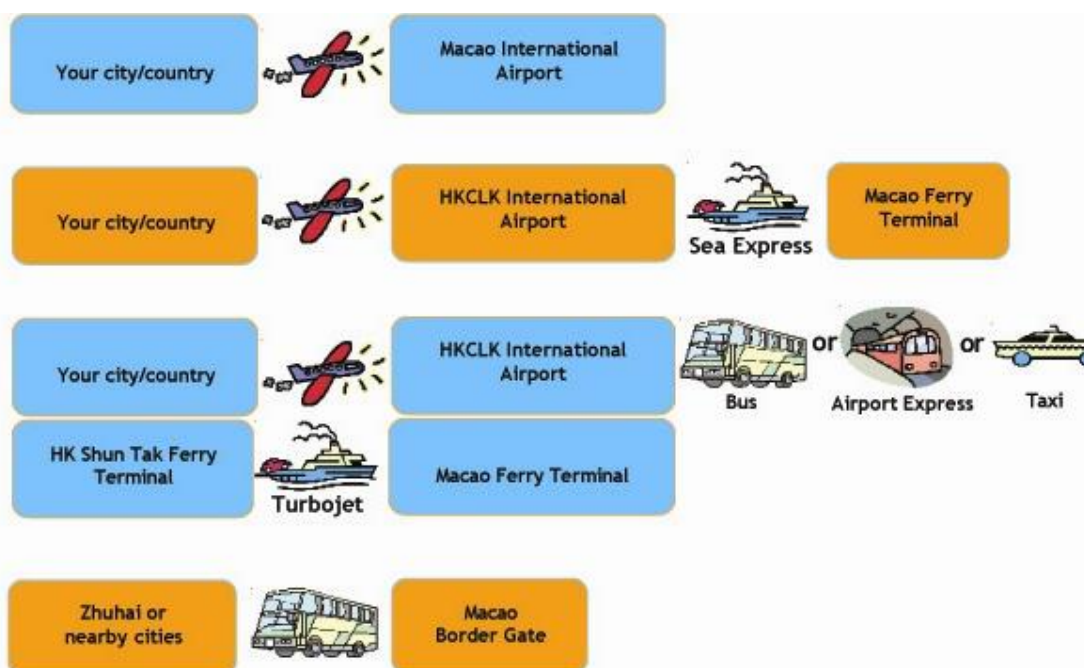
Portas do Cercos Port



Hengqing Port

.....

In Summary:



3. Registration, Arrival and Accommodation

Here, we outline the basic information on your registration, arrival and accommodation. For details, please read the attached “Arrival and Dormitory Check-in Instructions”.

3.1 Registration (**IMPORTANT!**)

All IAESTE trainees are required to register in University of Macau in order to begin the training, use the dormitory and access the facilities. In order to complete the registration, you need to return the **original** Application for Admission form, Medical Examination Report and a copy of your vaccination record showing a valid tetanus vaccination at least 3 weeks before the beginning of training. The templates of these documents have been sent to you together with the N/5 forms. Get in touch with us immediately if you have not received them.

On the next working day after your arrival, you are asked to report to IAESTE Macau Office in the campus and we will guide you through the second step of registration. After all the steps have been completed, you will obtain a student card of University of Macau which allows you to access the facilities (including the sports complex).

Bring the N/5-a (Acceptance note) with you when entering Macau and present it to the immigration officers when required. Make sure that your passport has a validity until at least six months after your training. Stay permit will be arranged by IAESTE Macau after arriving at Macau if necessary.

3.2 Arrival

Incoming trainees are asked to arrive at University of Macau dormitory by themselves. No pick-up will be arranged.

In normal situation, you will be able to arrive at University of Macau by following the instructions and should take less than an hour regardless of your point of entry in Macau SAR. Make sure you have sent us your confirmed itinerary before departing from your country and specify if you need any special arrangement. IAESTE Macau will be in touch with IAESTE offices of your country or you directly prior to your arrival.

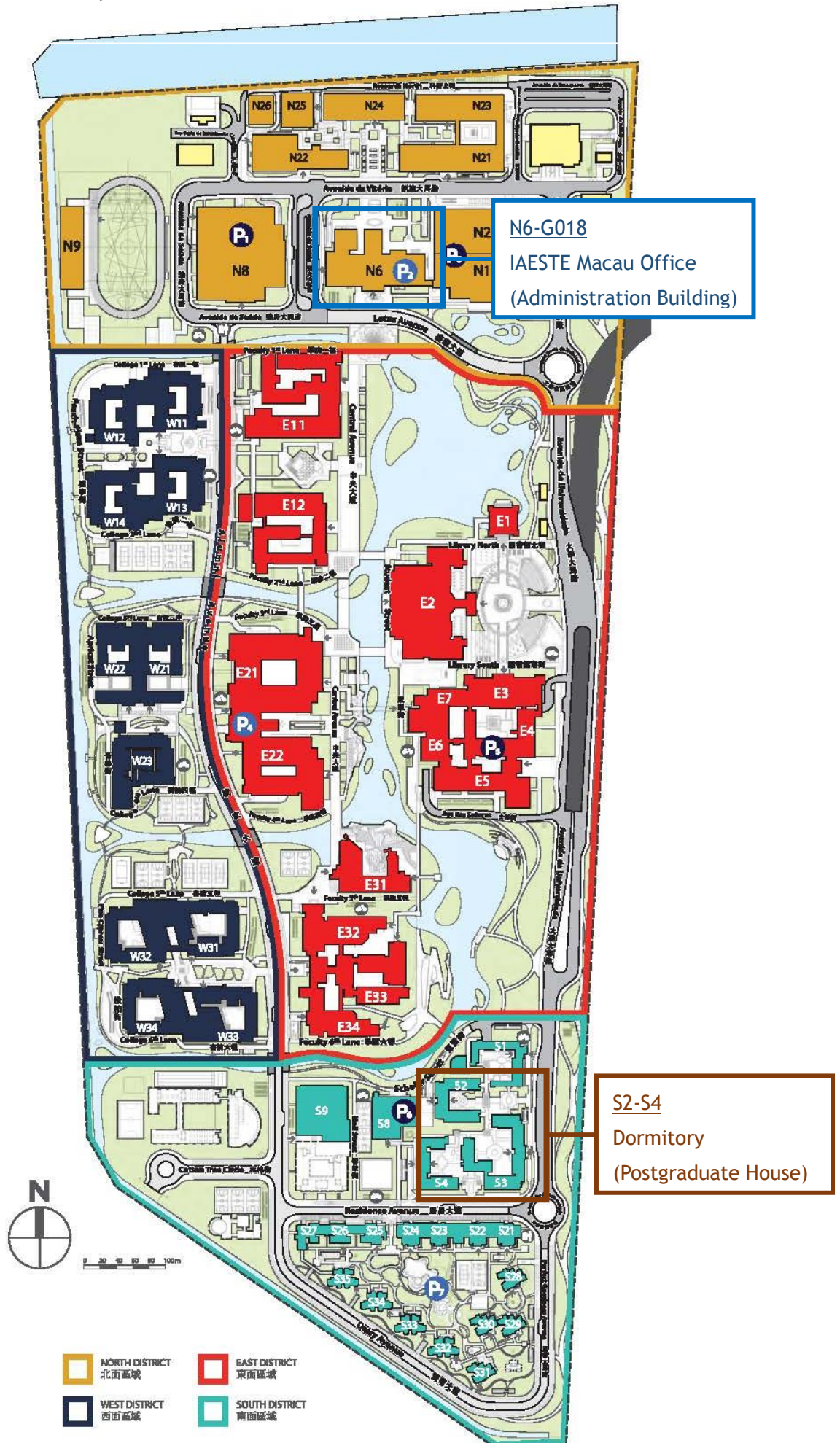
3.3 Accommodation

IAESTE Macau will host you in student dormitory (on-campus) of University of Macau. You are bound to follow rules and regulations that govern all students living in the same hostel. In some offers, the rent is waived. You are asked to respect the general conditions and cleanliness of the rooms offered as well as the cultural differences among students in the same area. Refer to attached “Instructions” for more details.

3.4 Reception and Activities

In order to make your stay in Macau more memorable and culturally fruitful, IAESTE Macau will, within its financial capacity, organize orientation activities and regular gatherings for you to know more about Macau and China and to establish a sense of belonging here. Please note that not all activities are free of charge. IAESTE trainees are requested to closely inform IAESTE Macau of any activities they organize for themselves, especially when such will take place outside of Macau.

3.5 Map of University of Macau



北區 North		
N1	UM Guest House	澳大賓館
N2	University Hall	大學會堂
N6	Administration Building	行政樓
N8	UM Sports Complex	澳大綜合體育館
N9	UM Stadium	澳大運動場
N21-24	Research Building N21 - N24	科研大樓 北二十一座至北二十四座
N25	Animal House	動物實驗樓
N26	Dangerous Goods Store	危險品倉庫
東區 East		
E1	University Gallery	大學展館
E2	UM Wu Yee Sun Library	澳門大學伍宜孫圖書館
E3	BOC Centennial Building	中銀百年紀念大樓
E4	Anthony Lau Building	劉少榮樓
E5-E7	Central Teaching Building E5 - E7	中央教學樓 東五座至東七座
E11	Faculty of Science and Technology	科技學院
E12	Faculty of Health Sciences	健康科學學院
E21	Humanities and Social Sciences Building	人文社科樓
E22	Faculty of Business Administration	工商管理學院
E31	Student Activity Centre	學生活動中心
E32	Faculty of Law	法學院
E33	Faculty of Education	教育學院
E34	(Under Development)	(建設中)
西區 West		
W11	Moon Chun Memorial College	滿珍紀念書院
W12	Choi Kai Yau College	蔡繼有書院
W13	Stanley Ho East Asia College	何鴻燊東亞書院
W14	Henry Fok Pearl Jubilee College	霍英東珍珠禧書院
W21	Chao Kuang Piu College	曹光彪書院
W22	Lui Che Woo College	呂志和書院
W23	Cheng Yu Tung College	鄭裕彤書院
W33	Ma Man Kei and Lo Pak Sam College	馬萬祺羅柏心書院
W34	Cheong Kun Lun College	張崑崙書院
南區 South		
S1	Hostel (for visitors and guests)	聚賢閣 (訪客專用)
S2-4	Postgraduate House S2 - S4	研究生宿舍 南二座至南四座
S8	University Mall	薈萃坊
S9	Shiu Pong College	紹邦書院
S21-35	Staff Quarters S21 - S35 (Partly Under Development)	教職員宿舍 南二十一座至南三十五座 (部份興建中)

4. Visa and Medical Insurance



4.1 Macao Visas

Passport holders from the following countries are exempt from Macau entry visas and are permitted to stay 30-90 days:

Australia, Austria, Belgium, Brazil, Canada, China, Czech, Denmark, Estonia, Finland, France, Germany, Greece, India, Ireland, Italy, Japan, Luxembourg, Malaysia, Mexico, Netherlands, New Zealand, Norway, Philippines, Poland, Portugal, Singapore, South Africa, South Korea, Spain, Sweden, Switzerland, Thailand, UK, Uruguay, USA.

(The list is subject to change without prior notice.)

If a visa is required, it can be obtained upon arrival in Macau, issued by the Immigration Department for a period of 30 days.



Immigration Section, Macau Public Security Force:

http://www.fsm.gov.mo/psp/eng/Service_Imm.html

4.2 Hong Kong Visas

If you need a visa to transit Hong Kong, information on Hong Kong visa requirements can be obtained from the Hong Kong Immigration Department. Most passport-holders do not require a visa for stays of less than 14 days.



Hong Kong Immigration Department:

<https://www.immd.gov.hk/eng>

4.3 China Visas

Visas are required for most foreigners entering Mainland China. A standard tourist visa is valid for a 30-day visit. They can usually be obtained from Chinese embassies or consulates. Landing visa application is available at some entry ports, except Afghanistan, Algeria, Bahrain, Cameroon, Egypt, Iran, Iraq, Jordan, Kuwait, Israel, Lebanon, Liberia, Libya, Nigeria, Oman, Pakistan, Palestine, Qatar, Saudi Arabia, Somalia, Sri Lanka, Syria, Sudan, Turkey, Uganda, United Arab Emirates, Yemen.

(The list is subject to change without prior notice.)

If you would like to visit nearby cities in China for a short time during or after your training, you can apply for a short-term tourist visa easily in designated travel agencies in Macau.

4.4 Medical Insurance

You must be insured against illness and accidents before leaving your country for traineeship. Be sure to have your insurance policy number and insurance card with you at all times in case of need or emergency.

In most cases, you will pay for the medical bill at consultation and claim the fees after you have returned to your country. You may want to bring some spare money or load some spare credits into your credit cards just in case.

University of Macau asks all their registered students to buy a UM insurance which covers medical services at designated local clinics and hospitals. If you do not want to pay for this extra insurance, we will provide a waiver form at registration.

5. Life in Macau

5.1 Weather



Macau has a humid subtropical climate. The annual temperature ranges from 6°C to 35°C. The humidity level is high and with an average range between 75% and 90%. Mostly during summer months, the annual rainfall is around 1.778mm. Summer is very hot and humid while winter is cool with modest rainfall. Students should note that the high humidity will intensify the heat or cold effect, making the weather much hotter or colder than the temperature suggests.

*****During summer time, beware of heat exhaustion on cloudless sunny days (even at night). Sunscreen and drinking water are important when travelling outdoors.**

Months	Humidity	Weather	Temp(approx.)	Clothing	Remarks
Jan - Mar (Winter)	Low	Cold and cloudy	8°C - 20°C	Woolen clothes, thick jackets or overcoats	-----
Mar - May (Spring)	Moderate to High	Warm and rainy	12°C - 25°C	Light cotton clothes	-----
June - Sept (Summer)	Very high	Very hot, very humid and rainy	25°C - 35°C	Light, breathable clothes in Summer	Typhoon season (see below)
Oct - Dec (Autumn)	Moderate	Sunny and warm	15°C - 25°C	Light jackets, cardigans, sweaters	Most pleasant season ☺

Typhoon and Rainstorm

Situated at the coast of the South China Sea entering the Pacific Ocean, Macau SAR is prone to threats of tropical cyclones (known commonly as “typhoons”). In extreme cases, severe rainstorm may also affect Macau. Below is a list of typhoon and rainstorm signal system used in Macau:

1	3	8NW	8SW	8NE	8SE	9	10	Rainstorm

If a signal 8 or above is hoisted, bridge surfaces between Macau and Taipa are closed (only limited access available at Sai Wan Bridge lower level crossway). As a preventive measure, sea and air connections between Macau and Hong Kong as well as most flights are cancelled. When rainstorm warning is issued, the public and private entities should take adequate prevention measures. Students should pay attention to reports from radio or TV (TDM) for any safety arrangements.



Macau Meteorological and Geophysical Bureau (SMG):

http://www.smg.gov.mo/smg/e_index.htm

5.2 Languages



The official languages of Macau are Chinese and Portuguese.

Cantonese Chinese is the mother tongue of the local population. Mandarin Chinese (Putonghua) as the national standard language is also widely spoken.

English is widely spoken and understood in tourist areas, public services and among younger generations. You may encounter some difficulty, however, when trying to use English in older sectors of Macau or when speaking to more senior members.

Portuguese is widely used in the written context (signage, company names, etc.) but not spoken. Only a small number of Macau citizens uses Portuguese as their daily language of communication.

5.3 Currency



The official currency in Macau is 'Pataca' (MOP). There are banknotes and coins in the following denominations:

Coins: 10, 20 and 50 avos (cents); 1, 2, and 5 Patacas.

Banknotes: 10, 20, 50, 100, 500 and 1000 Patacas.

HK dollars (HKD) and Renminbi (RMB) are widely accepted in Macau. However, some shops do not refund the exchange rate difference.

Money and traveller's cheques can be changed in larger hotels and banks. Authorized exchange dealers can be found all around the city.

5.4 Transportation

i. Bus



Buses are the main way of transportation (the other is taxi). All buses are air-conditioned. There are buses circulating around the Macau peninsula, Taipa, Cotai and Coloane. The general bus fee is MOP6.0, regardless of distance (there are some exceptions). If you get a "Macau Pass" card the fee is halved to MOP3.0. Macau Pass can be bought in most supermarkets and convenience stores.



Bus Information by Macao Transport Bureau:

www.dsat.gov.mo/bus/site/subpage.aspx



Transmac Bus



TCM Bus



New Era Bus

ii. Taxi



The flagfall charge is MOP\$19.00. Apart from normal taxis (black with cream roof), there is also radio-taxi-service.

Flagfall (first 1600m)	\$19.00
Every 240m thereafter	\$2.00
Luggage per piece in the boot	\$3.00
Taipa to Coloane surcharge	\$2.00
Special surcharges when boarding at the following locations	\$5.00
- Macau International Airport	
- Taipa Ferry Terminal	
- University of Macau campus	
Cab calling fee (waived for 1-hour or above advance booking)	\$5.00



Taxi Information by Macao Government Tourism Office:

http://en.macaotourism.gov.mo/plan/local_transportation_detail.php?id=2

5.5 Time



Macau is eight hours ahead of GMT, there is no daylight saving time.

5.6 Office Hours (in general)

Banks: Monday - Friday - 0900-1730
 Offices: Monday - Friday - 0900-1800, some on Saturdays
 Shops & Restaurants: Monday - Sunday, 1000-2200
 Museums: closed on Monday (in general)

5.7 Voltage



220 volts AC. Electric equipment working with different specifications will need transformers and adaptors.

5.8 Consulates in Hong Kong and Macau



Information and special assistance on liaising with consulates general of your country can be requested at IAESTE Macau Office.

5.9 Emergency and Useful Phone Numbers



Regional Code of Macau: +853

Making International calls from Macau:

00 +(country code) + (area code) + (local subscriber number)

(When making international calls, remember to omit the first zero of the area code.)

Emergency Services	
Emergency	999 / 110 / 112
Fire Brigade	2857 2222 / 119 / 120
Police	2857 3333
Ambulance services (Conde S. Januario Hospital)	2831 3731
Ambulance services (Kiang Wu Hospital)	2837 1333
Ambulance services (University Hospital)	2882 1838
Taipa Island (Health Center)	2881 3089
Coloane Island (Health Center)	2888 2176
University of Macau	
University of Macau	8822 8833
UM Security Centre	8822 4000
UM Postgraduate House (Management Company Office)	8822 2518
UM Sports Complex	8822 4412 / 8822 2512
UM Medical Center (Mondays - Saturdays)	8822 4123
Macau Government Departments and Services	
Macau Immigration Department	2872 5488
Macau Customs	2855 9944
Macau Government Tourist Office (MGTO)	2831 5566
MGTO Tourist Assistance Unit - Hotline	2833 3000
Macau International Airport:	a) Arrival hall b) Flight Schedule
	2886 1436 2886 1111
HKCLK International Airport	(852) 2769 7970
Macau Post Office	2857 4491
Telecommunications	
Directory Enquiry (for local phone numbers)	181
International Directory Enquiry	101
Weather	
Weather (SMG Hotline)	1311

5.10 Useful Websites



University of Macau and In-campus Services	
University of Macau	http://www.umac.mo/
UM Postgraduate House (Dormitory)	http://www.umac.mo/sao/srs/sh/aboutus/en/srs_management.php
UM Office of Sports Affairs	http://www.umac.mo/osa/en
UM Clinic (Mondays - Saturdays)	https://hseo.umac.mo/health-and-hygiene-affairs
Macau Public Entities and Services	
Macau SAR Government	http://www.gov.mo
Education and Youth Affair Bureau	http://www.dsej.gov.mo
City Guide of Macau	http://www.cityguide.gov.mo
Macau Department of Health	http://www.ssm.gov.mo
Macau Government Tourist Office	http://en.macaotourism.gov.mo/index.php
Meteorological and Geophysical Bureau (SMG)	http://www.smg.gov.mo/smg/c_index.htm
Transportation and Immigration	
Macau International Airport	http://www.macao-airport.com
HKCLK International Airport	http://www.hkairport.com.hk
HK Immigration Department	https://www.immd.gov.hk
Macau Immigration Service	http://www.fsm.gov.mo/psp/eng/Service_Imm.html
HK Airport Express Train	http://www.mtr.com.hk/en/customer/services/airport_express_index.html
Turbojet	https://www.turbojet.com.hk/en
Cotai Waterjet	https://www.cotaiwaterjet.com
Macau Bus Information	http://www.dsat.gov.mo/bus/site/subpage.aspx

5.11 Useful Apps for Getting around in Macau



	Experience Macao		Macao Taxi
	Bus Information System		Macau International Airport
	SMG (Macau Weather)		Macao Sailings HD

We look forward to seeing you in Macao!



Contact Us

Ms. Kiran LEI, Senior Exchange Administrator

Mr. Patrick LOU, Exchange Administrator

E-mail: iaeste_enquiry@umac.mo | Tel: (853) 88224392

Address: Avenida da Universidade, University of Macau

Global Affairs Office, N6-G018, Taipa, Macau, China



IAESTE
CHINA MACAU SAR